



X8Sub Extend Woofer



[www.qanon-audio.](http://www.qanon-audio.com)



SAFETY INSTRUCTIONS

1. Read this document

2. Pay attention to all safety instructions and hazards and obligatory warnings

3. Do not use equipment or accessories that are not approved by QANON AUDIO.

4. Attention to Sound Level

Do not approach the speaker when operating, and consider wearing earplugs.

Speaker system can produce very high sound pressure level (SPL), which can be instantaneous.

It results in permanent hearing impairment to performers, producers and audiences.

Listening can take place for a long time:

8 hours 90 decibels (A-weighted), 30 minutes 110 decibels (A-weighted), less than 4 minutes 130 decibels (A-weighted).

5. Read the manual before operating the product.

Use speaker system components described in user manual and follow instructions

6. Read the rigging manual before installing the product.

Use the hanging accessories described in the installation manual and follow the relevant procedures.

7. Before repairing the product, please read the "Maintenance" section of this document.

8. Do not expose products to extreme conditions

Do not expose the product to rain or waves.

Do not expose the product to humidity (fog, steam, humidity, cooling, etc.) or overheating (direct sunlight, radiator...) For a long time

9. Do not store products on unstable carts, brackets, tripods, brackets or tables.

10. Maintain this document as an integral part of the product

Put this document in a safe place.

Record any services of the product in the maintenance section of this document

Do not resell products without this update document

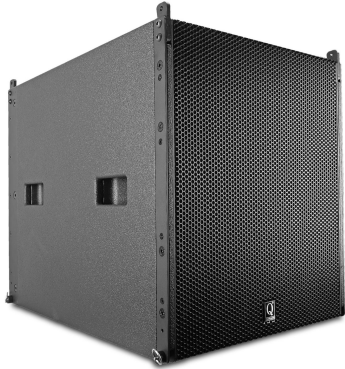
Thank you for purchasing QANON AUDIO #X8Sub. The container shall contain - 1 #X8Sub enclosure. Each QANON AUDIO #product has been tested and inspected before it leaves the factory and should arrive intact. Carefully open the container and check for any apparent damage. If so, inform the transport company or distributor immediately. Only the consignee can claim against the carrier for damage in transit. Cartons and packing materials must be kept for inspection by carriers. Read this document carefully to familiarize yourself with the product and identify external documents that contain basic information on correct and safe installation and operation of the product. All the documents described below can be accessed free of charge on the QANON AUDIO < website (www.qanon-audio.com).

As part of the continuous development of technology and standards, QANON AUDIO reserves the following rights:

Change product specifications and document contents without prior notice. Please visit the QANON AUDIO website regularly to download the latest updates of documents and software.



X8Sub Extend Woofer



- Maximum SPL 134dB
- 1 x 15" Neodymium LF driver unit
- 360° horizontal
- Adjust angle with (X8)0°, -2°, -4°, -6°
- Rigging or ground stacking integrated assembly system
- Low frequency limit extends to 36Hz
- Add X8 Line Source
- Add Xiv18 / Xiv28 subwoofer system
- C15/VDA/H Series amplifier controller

X8Sub High Power Extended Low Frequency Loudspeaker

X8Sub is a recommended subwoofer for X8 line arrays and other QANON AUDIO < products. It adds to the sub-low frequency of the system by enhancing the throwing ability of the low frequency. It allows the operating frequency range of the system to be extended to 36Hz.

The X8Sub extend woofer is internally loaded with a 15-inch speaker. It has powerful impact, sensitivity and low frequency performance, and its internal four corners have a triangular vent progressive shape that allows laminar airflow and reduced turbulence noise. These combined features help to improve the level of operation.

The X8Sub enclosure is made of Baltic birch plywood to ensure maximum acoustic and mechanical integrity.

The X8Sub extend woofer can be used as an independent array or fly at the top of a vertical array composed of X8 line arrays. X8Sub is driven and amplified by C15 or H series /VDA power controller. Protect and optimize different configurations of loudspeaker systems, including cardioid

Dimensions: width:430 mm, height: 560 mm, depth:600 mm ,
weight:35kg (79.3lbs)

The cabinet shall be fitted with internal hardware and connected via two parallel NL-4 SpeakOn



X8Sub Technical Specification

X8Sub Technical Specification

Type	Extend woofer
Frequency Response(Preset)	36Hz-300Hz(-10dB)
Horizontal	360°
Angle Increments(X8)	0° -2° -4° -6°
Angle Increments(X8)	0° +2° +4° +6°
Drivers	LF:1×15" Neodymium
Handling Power (AES)	LF:1200W
Maximum Peak SPL	134dB/1m
Nominal Impedance	LF:8Ω
Connections	2 x NL4 SpeakOn
Pin Connections	NL4=LF: +1-1
Height Front	560mm
Height Back	560mm
Width	430mm
Depth	600mm
Weight	35kg / 79.3lb

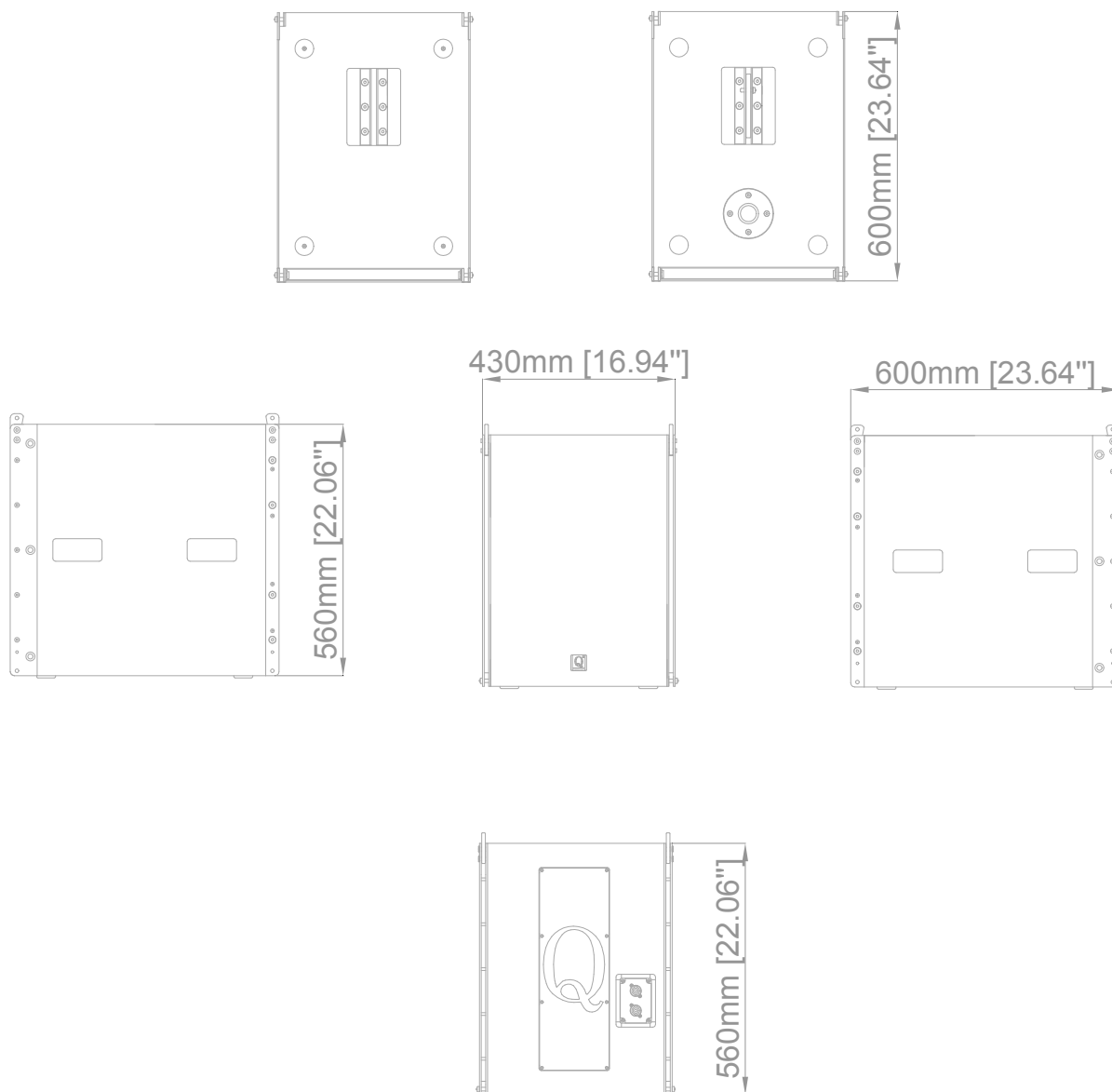
Rigging and Handling

Handle	4 ergonomic handles
Pole socket	1x 35mm Pole socket
Fastener	5 side fastener

Physical Data

Material	Baltic Birch Plywood
Finish	Black
Front	Polyester powder-coated steel grill
Rigging	Steel
Protection rating	IP45

Dimensions CAD

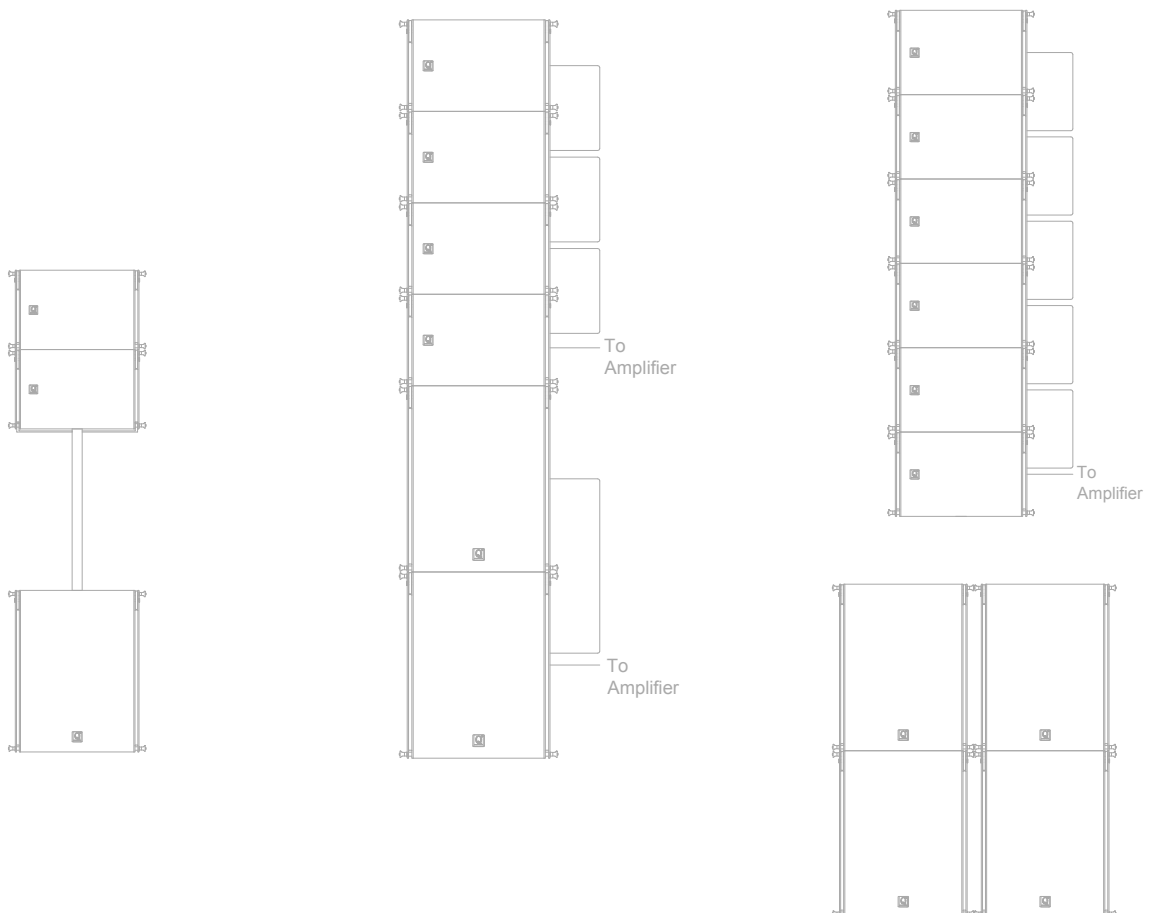




Application

The X8 line array system is designed and applied with at least 2 units/group, providing fast and simple ground stacking applications. The X8 line array system can be built to meet the needs of vertical coverage angle in the form of straight lines or curves, which can be used for large-scale site activities with extremely high level requirements. X8 uses multiple configurations of up to 12 speakers per group, and 3-point hoisting method is also adopted for hanging parts. 4mm steel (synthetic width is 18 mm) and 8mm steel connecting rod are used. When 12 speakers are hoisted, the safety factor of hanging parts is 6:1. The X8 can be integrated with the X8 Sub extended woofer speaker suspension system, integrated with the X8 Sub woofer or integrated with the ground stack to enhance the system's low frequency response. The Xiv18 / Xiv28 speakers are used as ultra low frequencies for quick and easy lifting or Ground stacking integration. X Series Line Array X12 / X10 / X8 (Incremental Consistency)
Adjustable degrees: 0°, 2°, 4°, 6°, 8°, 10°, 12°

Type (stander type, Rigging type)





H Series Maximum number of enclosures per Amp

Enclosure	Max enclosure in parallel	Max enclosure per controller
X8	4	4
X10	4	4
X12	4	4
X8Sub	2	4
X10Sub	2	4
X12Sub	2	4
Xiv18	2	4
Xiv28	1	2

C Series Maximum number of enclosures per Amp

Enclosure	Max enclosure in parallel	Max enclosure per controller
X8	4	8
X10	4	8
X12	4	8
X8Sub	2	8
X10Sub	2	8
X12Sub	2	8
Xiv18	2	8
Xiv28	1	4

Enclosure	1	2	3	4
X8	LF:16 Ω / HF:16 Ω	LF:8 Ω / HF:8 Ω	LF:5.3 Ω / HF 5.3 Ω	LF:4 Ω / HF:4 Ω
X10	LF:16 Ω / HF:16 Ω	LF:8 Ω / HF:8 Ω	LF:5.3 Ω / HF 5.3 Ω	LF:4 Ω / HF:4 Ω
X12	LF:16 Ω / HF:16 Ω	LF:8 Ω / HF:8 Ω	LF:5.3 Ω / HF 5.3 Ω	LF:4 Ω / HF:4 Ω
X8Sub	LF:8 Ω	LF:4 Ω	None	None
X10Sub	LF:8 Ω	LF:4 Ω	None	None
X12Sub	LF:8 Ω	LF:4 Ω	None	None
Xiv18	LF:8 Ω	LF:4 Ω	None	None
Xiv28	LF:4 Ω	LF:2 Ω	None	None

NL4 4-Pin 4*4 ²	X8 / X10 / X12	
Transducer connectors	LF = +1-1 HF = +2-2	
NL4 4-Pin 2*4 ²	X8Sub / X10Sub / X12Sub	
Transducer connectors	LF = +1-1	
NL4 4-Pin 2*4 ²	Xiv18 / Xiv28	
Transducer connectors	LF = +1-1	



TRANSPORTATION ACCESSORIES

X8Sub-Touring case:

removable front case on wheels (one X8Sub)



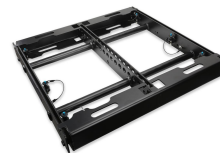
Rigging Frame Accessories

X8 / X8Sub-U Shackle (3' 5/8) 4t



Rigging Frame with Extender Beam

X8 / X8Sub-Bump



Speaker Cable

X8 4Pin NL4 4 x 4 mm² (50cm)

X8 4Pin NL4 4 x 4 mm² (2m)

X8 4Pin NL4 4 x 4 mm² (15m)

X8Sub 2Pin NL4 2 x 4 mm² (50cm)

X8Sub 2Pin NL4 2 x 4 mm² (15m)





D Series Processor Recommend



D36

D48

H Series Controller Recommend

X8



X8Sub/Active



Xiv18



Xiv28



H-600
2x600w 8ohm



H-1200
2x1200w 8ohm



H-1200
2x1200w 8ohm



H-1800
2x1800w 8ohm

Associated Enclosures

X10



X10 Sub/Active



Xiv18



Xiv28

